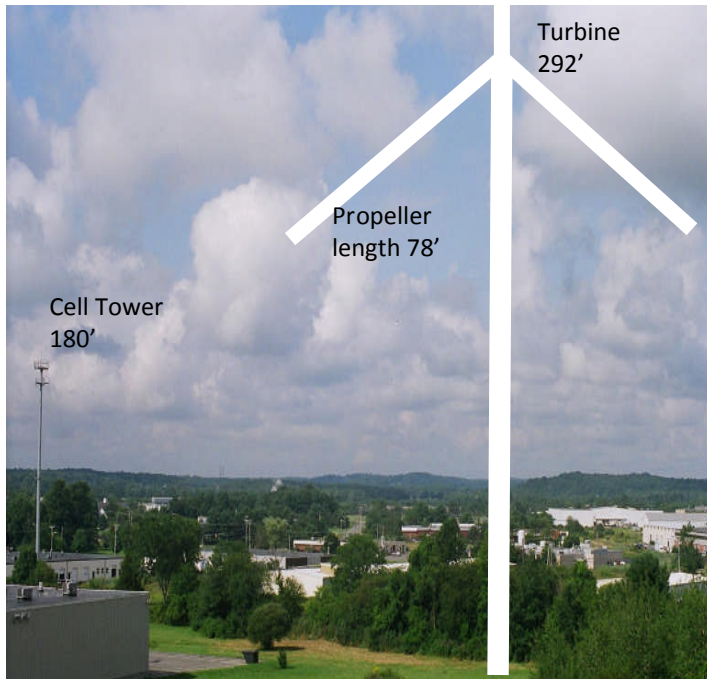


NOT against Wind Energy – FOR it being in the right place

Newburyport - <http://www.backbaywind.org>

Too Close

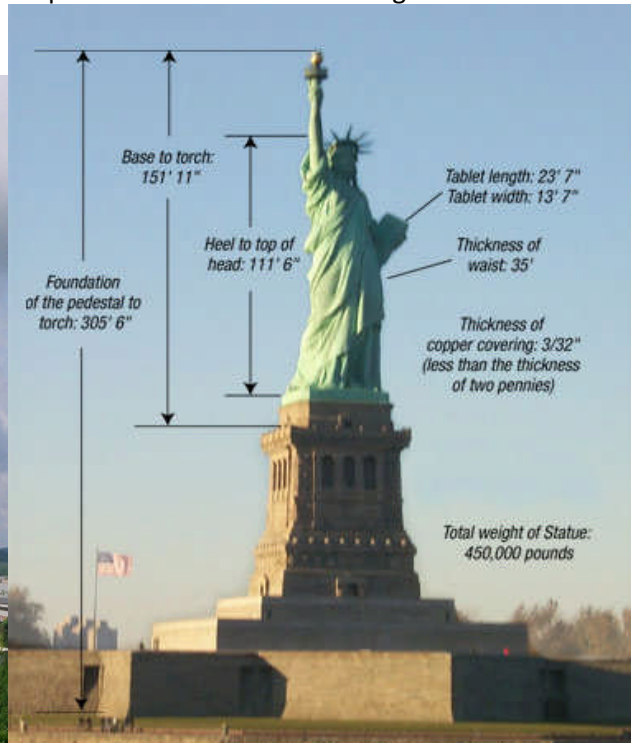
Close to many industrial and residential buildings



Tower base line drawn to balloon test height (approximate depiction)

Too Big

Proposed turbine almost the height of the Statue of Liberty



Potential turbines proposed to exceed the Statue height

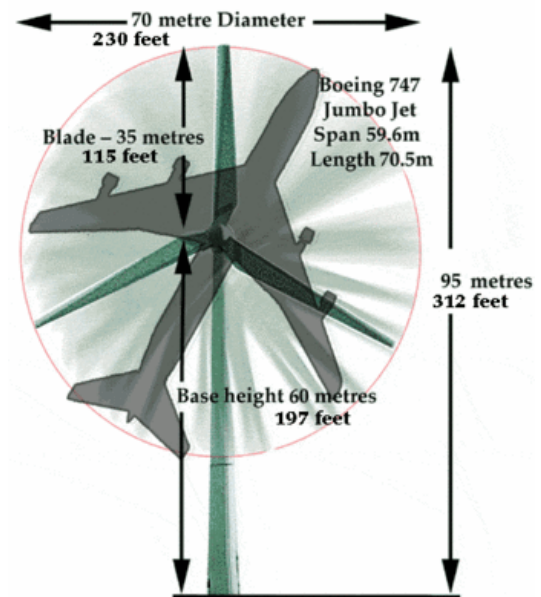
Too DANGEROUS

The lack of sufficient setbacks allows for the turbine to be within the proximity of surrounding structures. Imagine this happening at the industrial park



TOO LARGE

Picture a Boeing 747 revolving on the horizon



<http://www.awea.org/> <http://www.wind-watch.org/>

Too Loud

There will be noise and vibration created by the turbine



Are you tired of paying high-energy costs?

Alternative energy is a must!

But let's do it right, not at the expense of the health and welfare of the general public.

Did you know that?

1. A 292-foot (approximately 22 stories) wind turbine is to be built in the Newburyport Industrial Park Wind Turbine application for Parker Street on file
2. This wind turbine is the first of potentially many more turbines to come to Newburyport. FAA granted letter of determination <https://oeaaa.faa.gov/> proposed height 389'

3. The Newburyport ordinance allows wind turbines to be built with very minimal setback, *ONLY*:

- a. **600** feet from a “residential” structure
(only three times the “hub” height)
- b. **300** feet from a residential zone
- c. **150** feet from a property line
And of greatest concern, only
- d. **78’ from an industrial building**

Newburyport Zoning Ordinance – <http://www.cityofnewburyport.com/Planning/Index.html>

Organization/country	Setbacks
Australia	1 Kilometer(KM)
France	1.5 KM
Germany	1.6 KM
Holland	1 KM
Raytheon	Suggests 1000'
Scotland	½ mile
New York	1200 feet
Pennsylvania model	5 time hub height
Vermont Energy/Green Mountain Power	1320-2640 feet

4. Wind turbines produce noise
<http://www.bwea.com/ref/noise.html> <http://abcnews.go.com/video/playerIndex?id=5978741>
<http://www1.eere.energy.gov/windandhydro/>
5. Wind turbines produce intermittent shadow casting by the rotation of blades. These flickers can cast repetitive shadows on your property.
<http://www.windwisefairhaven.com>
6. Health and safety issues from wind turbines include the following concerns: Ice throw, fire, catastrophic failure, noise, and flicker.
<http://www.windaction.org/>
7. Health problems are associated with the low frequency noise and vibration generated by wind turbines. This includes: sleep disturbance, headaches, dizziness, nausea, exhaustion, anxiety, anger, irritability, depression, problems with concentration and learning and tinnitus (ringing in the ears).
<http://www.windturbinesyndrome.com/?p=100>

For more information go to:

<http://www.backbaywind.org>